

NEW ZEALAND RESIDENTIAL ARCHITECTURE AND DESIGN

# HOUSES

## New Zealand's Best

Our country's award-winning  
homes revealed

+

19 cool houses for  
your summer reading

### Summer Madness

Adventurous  
designs for the  
home

### It's a London Thing

Design Festival  
Trend Report

### 6 Elegant Homes

By Architectus

### That's Entertainment

Hot essentials for  
the party season



# Studio & Garden Room – Peters House

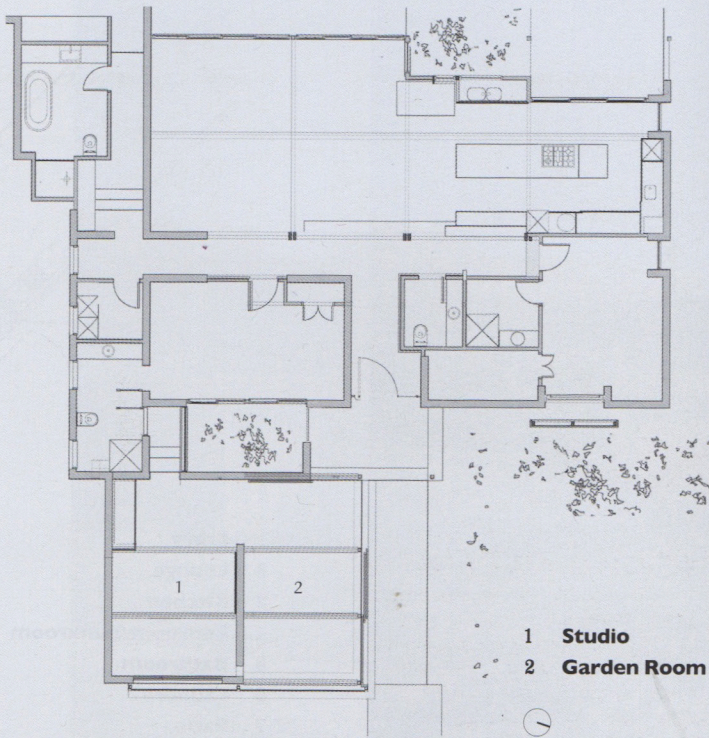
by Lynda Simmons

• AUCKLAND •

PHOTOGRAPHY **ANDREW LOWE**

A garage and carport have been converted into a studio and garden room in a transformative project, which re-imagines the traditional sterile relationship of house, front yard and street. The dominance of the car and default resort to a banal patch of lawn have given way to an engaging and sophisticated addition designed in concert with a mounded garden. A striking monochrome palette provides an invigorating interior, which is given sympathetic relief by a ceiling pattern taken from a John Pule lithograph.

— NEW ZEALAND ARCHITECTURE AWARDS JURY



Clockwise from top left: the monochromatic studio space; a chunky concrete sink; the ceiling pattern relief taken from a John Pule lithograph.

“A striking monochrome palette provides an invigorating interior, which is given sympathetic relief by a ceiling pattern taken from a John Pule lithograph.”



## Elegance and pattern

Within the Kiwi tradition of garage transformations, this tiny conversion project of a 1970s' single garage and carport into a garden room and studio is to be commended. Located in Sunnyside, Pakuranga, this blockwork garage has been transformed into an elegant pavilion, carefully connected to the main house and composed of heavy and light components, including a material palette of black and white.

